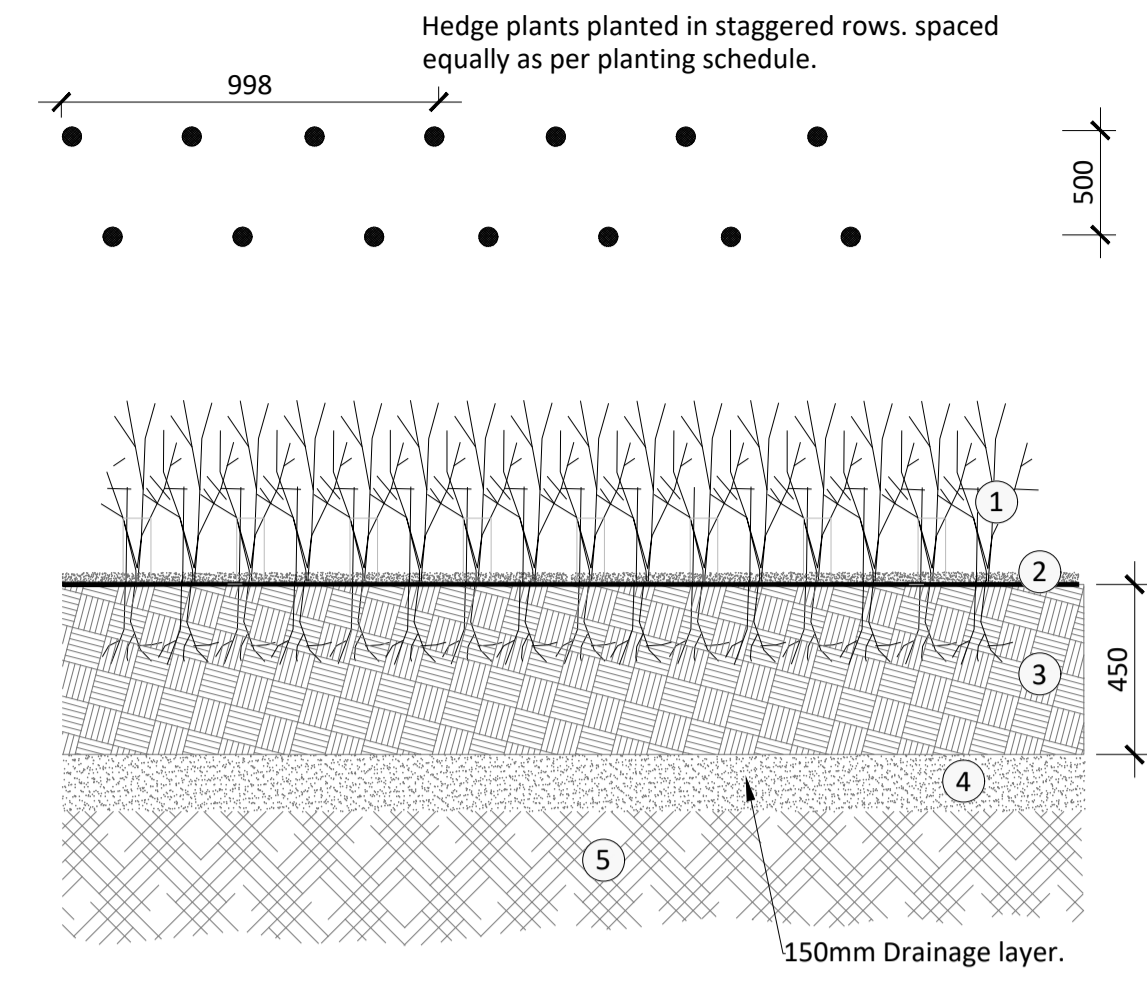


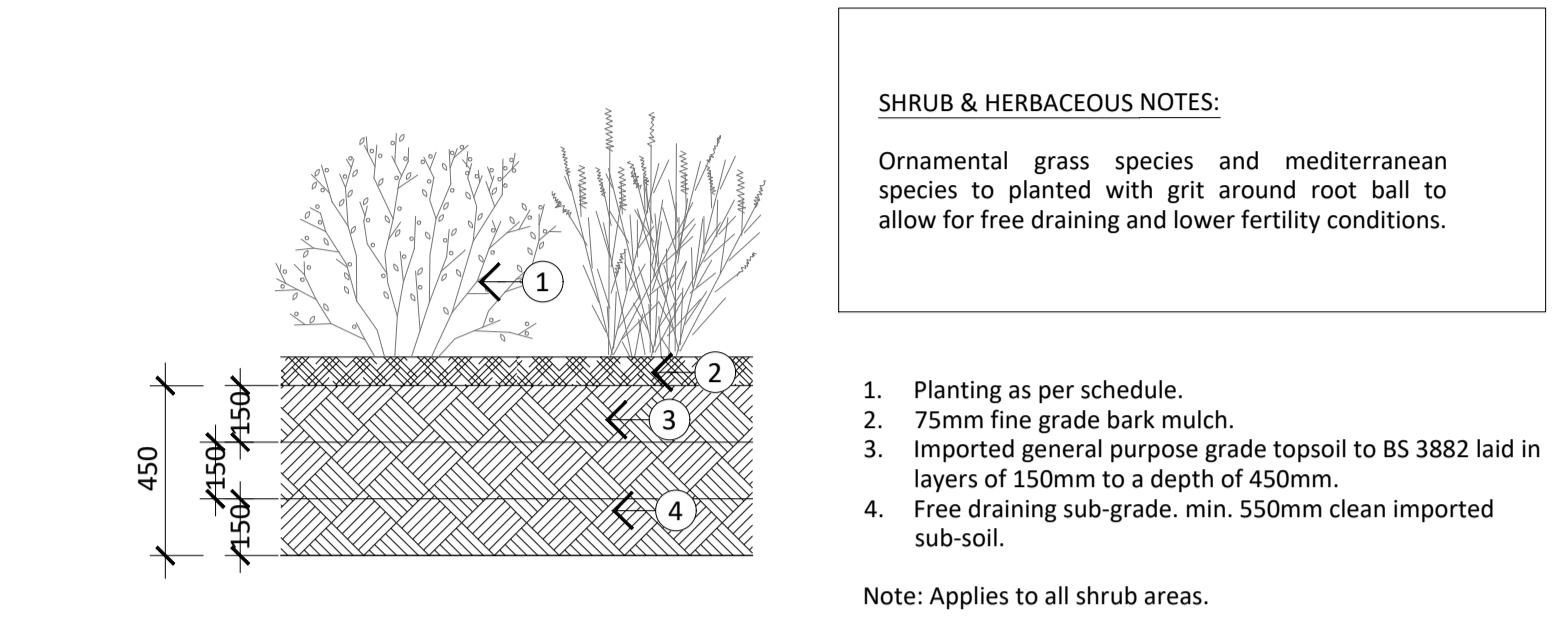
Copyright. All Rights Reserved.
 This work is copyright and cannot be re-produced or copied in any form or by any means (graphic, electronic, or mechanical including photocopying) without the written permission of the originator. Any license, express or implied, to use this document for any purpose whatsoever is restricted to the terms of the agreement or implied agreement between the originator and the instructing party.
 Unless otherwise stated all dimensions are in millimeters. Where dimensions are not given, drawings must not be scaled and the matter must be referred to the Landscape Architect. If the drawing includes conflicting details/dimensions the matter must be referred to the Landscape Architect. All dimensions must be checked on site. The Landscape Architect must be informed, by the Contractor, of any discrepancies before work proceeds.
 THIS DRAWING IS TO BE READ IN CONJUNCTION WITH RELEVANT CONSULTANT'S DRAWINGS.



- Legend:**
- Notes: Prior to planting all areas shall have stone debris greater than 50mm removed from site, all rhizomes shall also be removed in advance of cultivation, all shrub border planting shall be cultivated to a depth of 300mm and re-graded to suit levels.
- Hedge planting- refer to general arrangement for species and location, please note that the top of the Rootball must be level with the top of soil for height of hedging at planting refer to planting schedule.
 - 75mm depth of organic mini chip mulch, sample to approval prior to spreading, grade garden mulch down to plant stem base from 200mm distance. Note: mulch must not be placed against base of stem or plant failure could occur, contractor to ensure the bark supplied would also be compliant for use in children's playground facilities as a 'play bark' surfacing treatment.
 - 450mm depth of good quality imported topsoil, sample to approval in advance of procurement and delivery.
 - 150mm depth of cultivated sub-grade / free draining clean gravel if drainage issues are evident, seek approval prior backfilling.
 - Free draining sub-grade, min. 400mm clean imported sub-soil.
- Note: Applies to all hedge areas.
- Note: refer to planting schedule for heights and selected species.

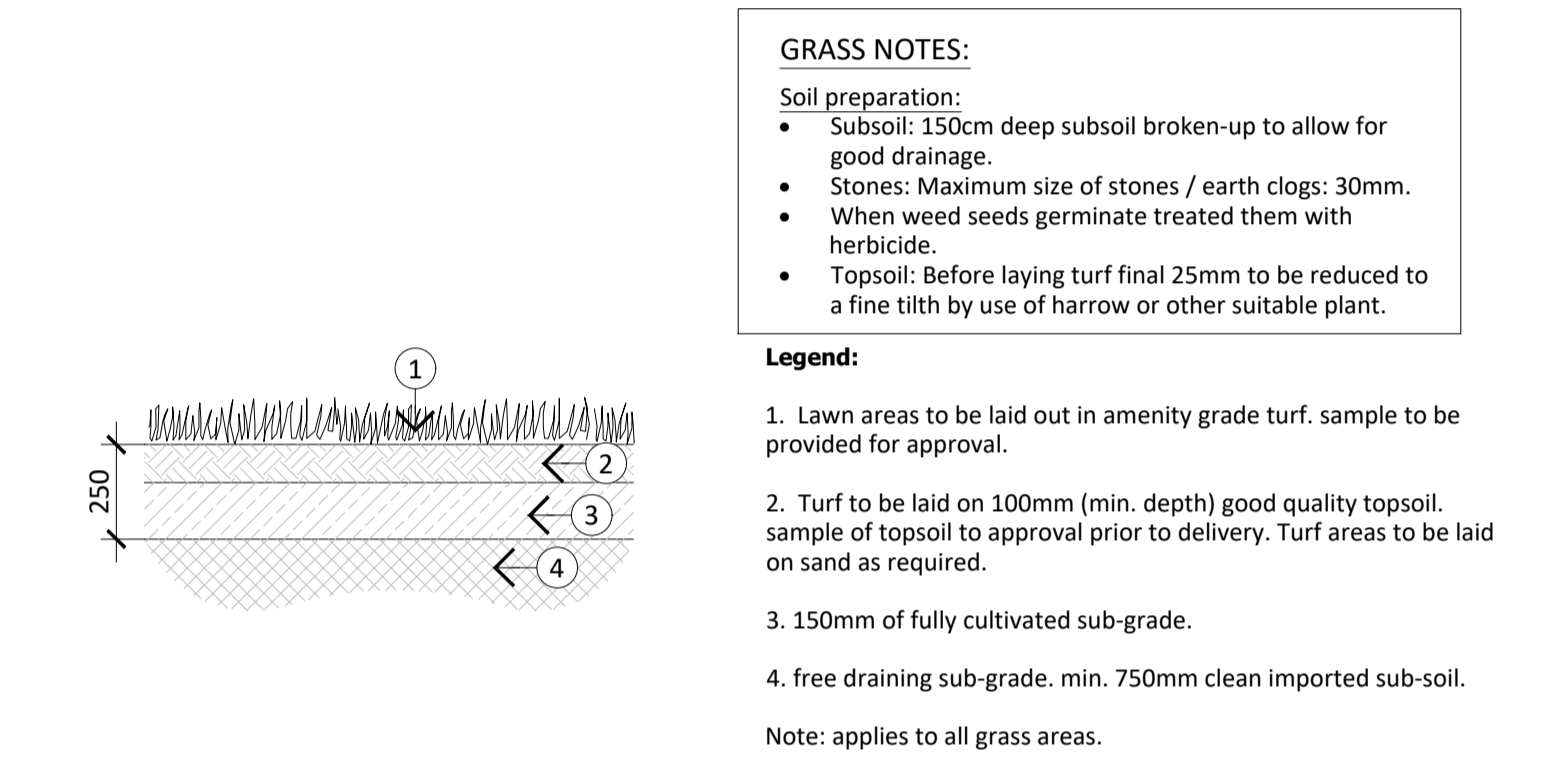
02 | HEDGE PLANTING

Scale 1:20



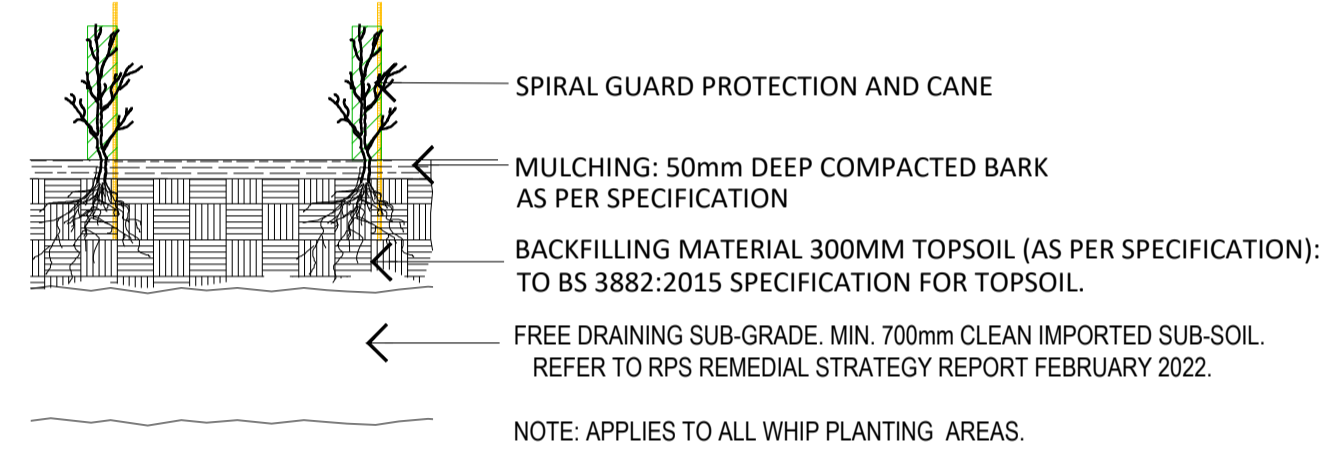
01 | SHRUB PLANTING

Scale 1:20



03 | TURF PLANTING

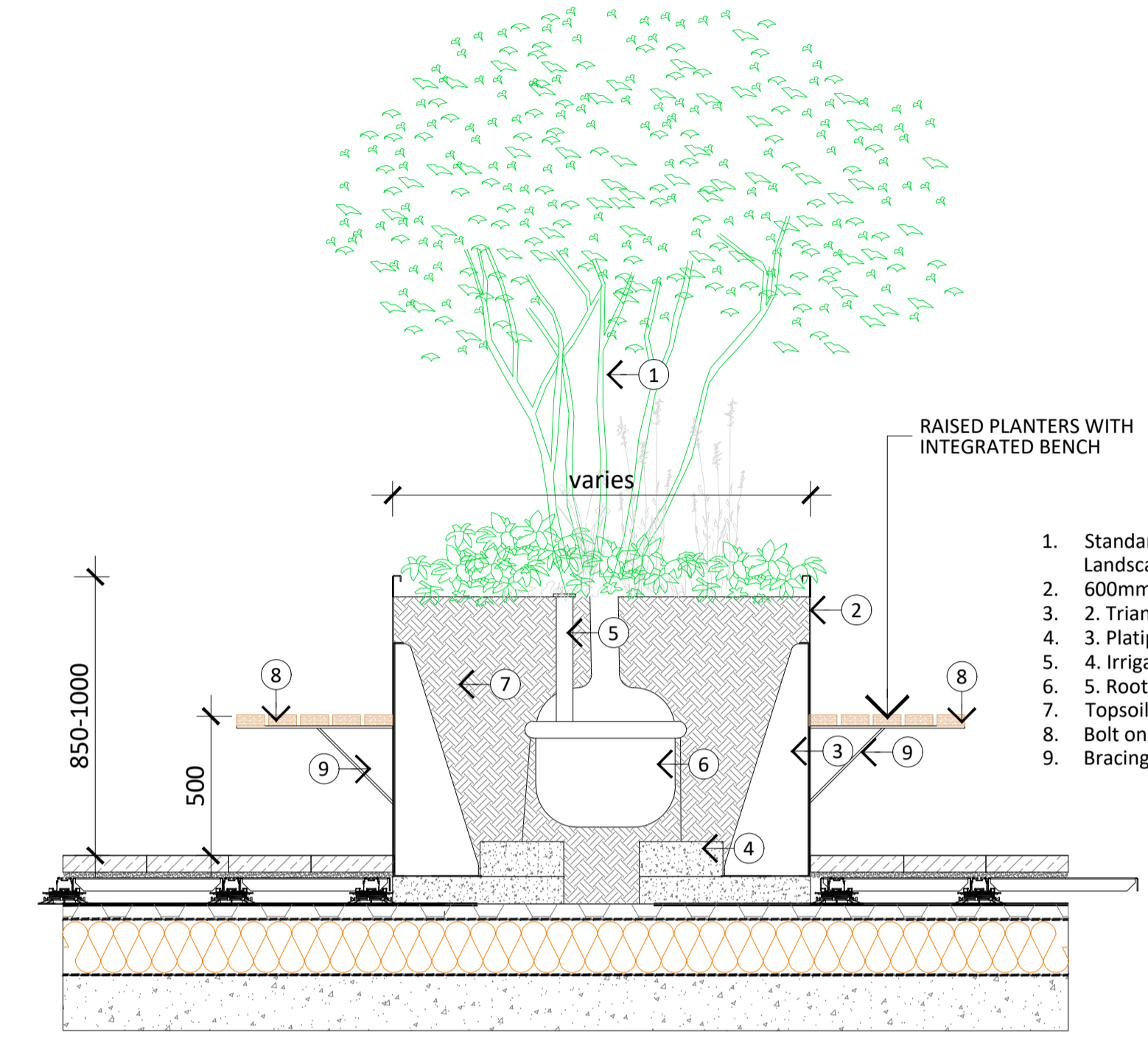
Scale 1:20



04 | WHIP PLANTING

Cross Section

Scale:1:20



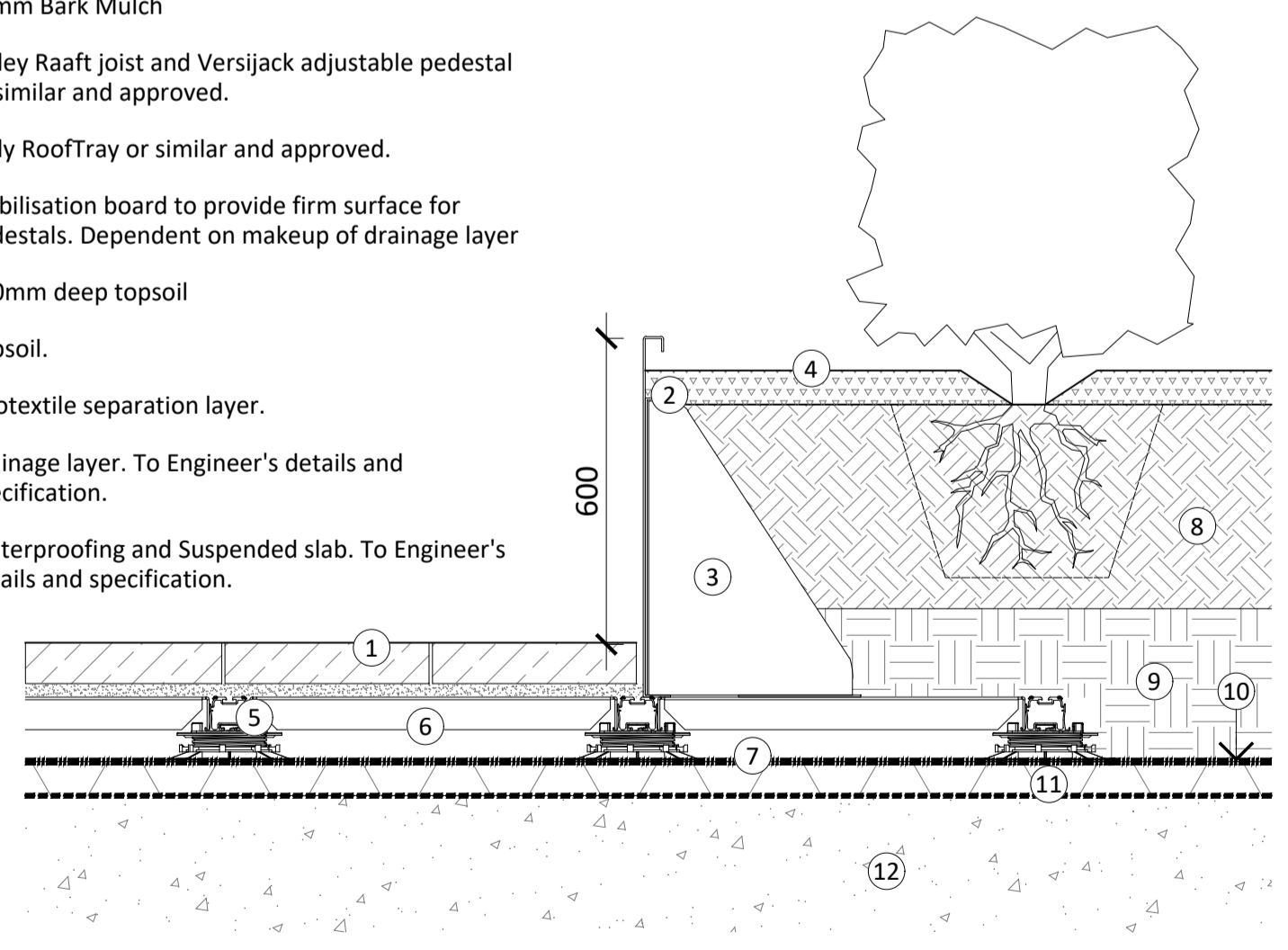
- Standard tree and underplanting. Refer to Landscape layout drawings.
- 600mm high folded steel planter.
- Triangular securing bracket.
- Platipus deadman anchor rootball cradle.
- Irrigation and Aeration pipe with cap.
- Root ball. Size dependant on species.
- Topsoil.
- Bolt on cantilever hardwood bench.
- Bracing.

05 | STEEL PLANTER WITH INTEGRATED TIMBER BENCH

Cross Section

Scale: 1:20

- LEGEND:**
- Permeable PC Block Paving on Kinley Pedestal Subframe. Type and size to be agreed. Blocks to be laid on bedding mortar.
 - 600 mm High folded steel planter.
 - Triangular securing bracket.
 - 50mm Bark Mulch
 - Kinley Raaft joist and Versijack adjustable pedestal or similar and approved.
 - Kinly RoofTray or similar and approved.
 - Stabilisation board to provide firm surface for pedestals. Dependent on makeup of drainage layer
 - 300mm deep topsoil
 - Subsoil.
 - Geotextile separation layer.
 - Drainage layer. To Engineer's details and specification.
 - Waterproofing and Suspended slab. To Engineer's details and specification.

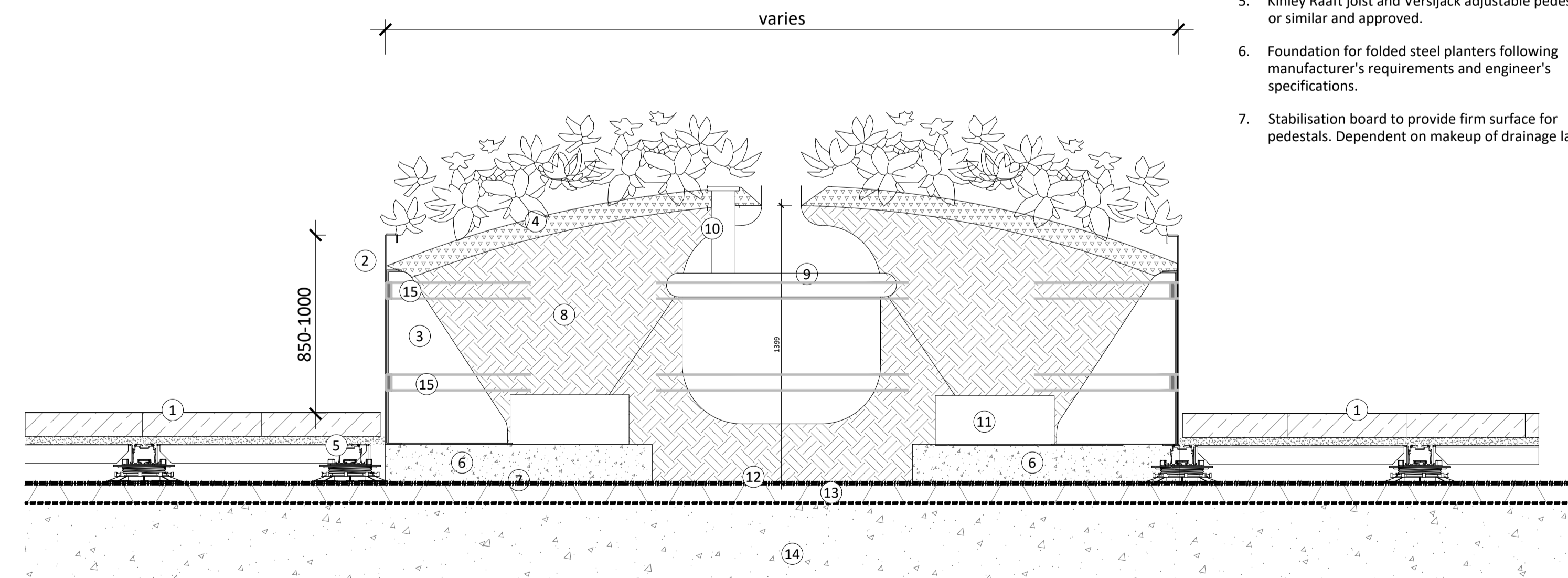


SECTION Note: All sub-bases to be confirmed by engineer

06 | STEEL PLANTER - ON KINLEY SYSTEM

Section

Scale 1:10



SECTION Note: All sub-bases to be confirmed by engineer Podium make up varies

07 | STEEL PLANTER TREE PLANTER - ON KINLEY SYSTEM

Section

Scale 1:10

- LEGEND:**
- Permeable PC Block Paving on Kinley Pedestal Subframe. Type and size to be agreed. Blocks to be laid on bedding mortar.
 - 850 mm high Folded steel planter.
 - Triangular securing bracket.
 - 50mm Bark Mulch
 - Kinley Raaft joist and Versijack adjustable pedestal or similar and approved.
 - Foundation for folded steel planters following manufacturer's requirements and engineer's specifications.
 - Stabilisation board to provide firm surface for pedestals. Dependent on makeup of drainage layer
 - Mounded topsoil
 - Rootball. Size dependent on species.
 - Irrigation and Aeration pipe with cap.
 - Platipus deadman anchor rootball cradle.
 - Geotextile separation layer.
 - Drainage layer. To Engineer's details and specification.
 - Waterproofing and Suspended slab. To Engineer's details and specification.
 - Bracing support bars following manufacturer's guidance

PLANNING	CT	17.03.22	P01
Revision Details	AB	Date	Rev
	By		
	Check		

Status: PLANNING



Hawarden House, 163 Upper Newtownards Road, Belfast, BT4 3HZ
 T: +44 (0)28 9029 8020 E: info@parkhood.com parkhood.com

Client: Tiznow Property Company Limited (Comer Group Ireland)

Project: City Park Development at the Former Tedcastles Site, Centre Park Road, Cork City

Title: Landscape Details - Soft Landscaping Sheet 2 of 2

Scale@A1: 1:20 Date: March 2022

Dwg.no: 7248-L-2906